



2016 Annual Report

Dear Friends,

Each year, the mission and purpose of Dave's House become more clear. We continue to honor the memory and courage of our name sake, Dave Jeffreys, who discovered transformational opportunities when he found permanent supportive housing. When Founders Ron and Lin Wilensky made a personal commitment to create the same opportunities for others suffering from serious mental illness (SMI), they began a journey that has changed lives forever.

Dave's House is expanding our impact by being a catalyst, supporter and operator of services and programs that make permanent supportive housing possible for those most vulnerable and under-served in our community. We help individuals who have a history of homelessness and are struggling with SMI and disabilities – and would be lost without a Dave's House to call home. This only happens through strong and skilled provider partners including Aspire Healthcare Partners and Pathway Homes of Florida and Virginia. Progress is also possible because of a coordinated approach led by Orange County Government, the City of Orlando, the Homeless Services Network and community support through philanthropic funds.

We are grateful to our founders, board of directors, partners, volunteers and donors who provide the time, talent and treasure to make our programs possible. Thank you to all who give. We could not support and uplift the most neglected among us without the contributions of many.

Thank you!



Pam Gould
CEO & President

Mission | To transform lives and give hope to people with serious mental illness through creating stable homes that provide lasting recovery.

Vision | An end to the housing crisis for people with serious mental illness.

Programs

Dave's House utilizes two permanent supportive housing models, dependent upon the specific needs of each resident:

- **Scattered Site Single Family Home:** This Traditional Home Model keeps individuals from the streets – creating a single family home residence for typically four individuals who are graduating from transitional care or are on the verge of homelessness and back into the cycle of instability.
- **Dave's Housing First:** This Housing First Model takes individuals off the streets – providing apartment homes for those with SMI alongside co-occurring disabilities. These individuals require a much greater intensity of services.

Support for both of these models consists of ongoing mental health case management; medication evaluation and treatment; mental health/substance abuse treatment; 24-hour/365-days-a-year crisis intervention and stabilization services; day support programming and vocational services; life skills training; and coordination with primary health care and dental services, provided with our behavioral healthcare partners.

Our Accomplishments

\$3.2 million in housing development and neighborhood improvement with our partners

Communities impacted

Orlando, Florida; Ft. Lauderdale, Florida; and Fairfax, Virginia



9 Scattered Site Single Family Homes



2016 Accomplishments

2 Scattered Site Single Family Homes 

Dave's Housing First launched



replaced a **roof**

69 residents served



funded a **van** for Dave's Housing First



created a **Volunteer Brigade**



Our Approach

Dave's House provides affordable permanent supportive housing for people to manage their illnesses and other life obstacles so that they may succeed.

Permanent supportive housing is an innovative proven solution that combines affordable housing with services that help people who face the most complex challenges to live in wellness with stability, autonomy and dignity.

Working with partners at the local, state and federal levels, we develop homes based upon best practice models that effectively serve at-risk and homeless individuals with SMI and other disabilities. Dave's House develops homes and support services with our behavioral healthcare partners.

Dave's House Annual Expenses



Note: 2015 Expenditures, pending 2016 Financials.

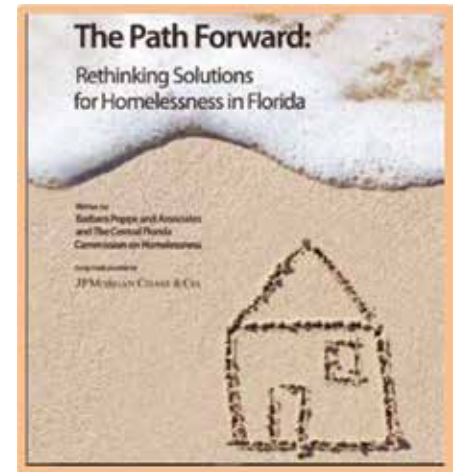


State and Regional Challenge

According to The Central Florida Commission on Homelessness' 2014 report, *The Cost of Long-term Homelessness in Central Florida*, the community is spending \$31,065 each year per chronically homeless person for emergency shelter, treatment, incarceration, inpatient hospitalizations and emergency room visits. In contrast, the cost to provide permanent supportive housing is \$10,051 per person annually. The annual cost savings of \$21,014 per individual applied to the number of people who experience chronic homelessness in Central Florida would result in an annual savings of \$30 million.

“There is a tremendous shortage of resources to provide critically-needed services – case management, mental health services, substance use treatment and healthcare. This contributes to homelessness and makes it harder for people to exit homelessness.”

– The Central Florida Commission on Homelessness, *The Cost of Long-term Homelessness in Central Florida*, 2014



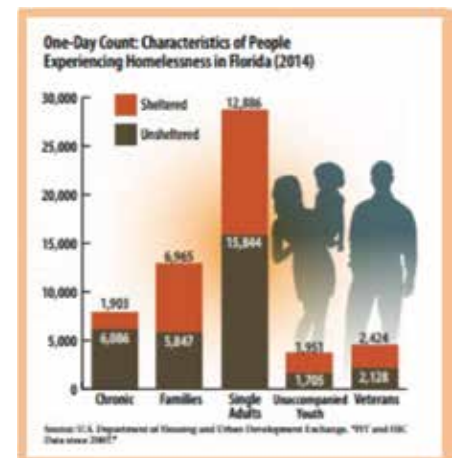
Consensus

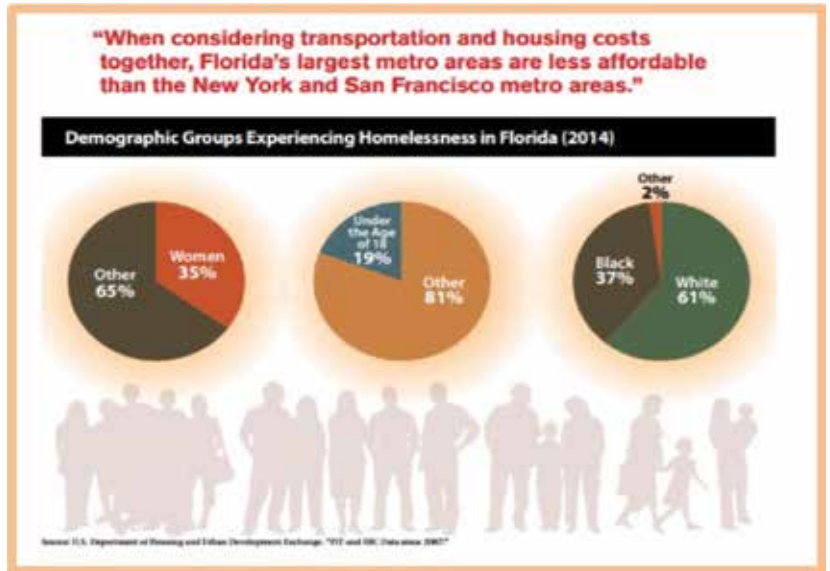
A search for a viable solution to the homelessness issue in Florida was the impetus for *The Path Forward 2014* report. The resulting state-wide research and expert input confirms specific key findings:

- there is a greater need for public education about homelessness
- the issues causing homelessness are similar across Florida
- cohesion between the public, private and philanthropic sectors is a necessity
- the cost of housing a person is cheaper than keeping them on the streets
- different subgroups of homeless people need different solutions
- a Housing First approach is necessary

The report further detailed specific ways to achieve a solution:

- creating a local system with the end goal to make homelessness rare, brief and one-time
- focusing on housing solutions like Rapid Re-Housing, permanent supportive housing and Housing First practices
- using data to track progress and monitor performance
- investing only in proven solutions
- directing sufficient resources from the public and private sectors to right-size the system and programs to match each community's unique needs.





Source: rethinkhomelessness.org, Path Forward Final Report



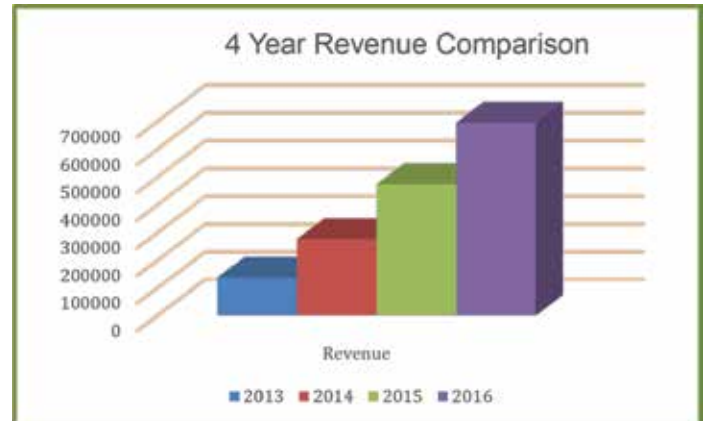
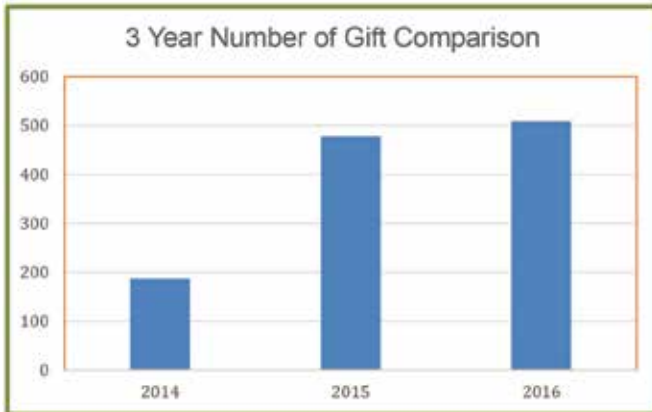
Ongoing Efforts

Dave's House is committed to taking a leadership role in ending homelessness in Central Florida. Working with regional groups including the Central Florida Commission on Homelessness, we will lend our best practices models, expertise, resources and social capital to this end.

Dave's House anticipates doubling the number of homeless individuals we house in 2017, totaling over 300 people. We will achieve this capitalizing upon our solid infrastructure and the balanced sustainability of our core operations.

Resources & Financial Management

Dave's House is a 501c3 non-profit; we file a 990 annually. The accounting firm WithumSmith + Brown completes an Accounting Financial Report. We annually update our Central Florida Foundation portrait.



2016 Board of Directors

Ron Wilensky, Chairman and Co-Founder, Navigator Executive Advisors
Lin Wilensky, Co-Founder, Marriott International (Retired)
John Moskos, Vice Chair, Wells Fargo
Martha Harriman, Treasurer, Jewett Orthopaedic Clinic (Retired)
Edward Hofma, Secretary, WithumSmith + Brown
Teri Benson, Pando Partner Wealth Management, Raymond James
Jim DeMark, Community Based Care of Central Florida
Adam Eckelbarger, Mader Southeast
John Hussey, RealTrend, Inc.
Steve McIntosh, Concrete Solutions for a Clean Environment
Joel McNair, Pathway Homes of Florida, Inc.
Joe Mendoza, AmeriLife & Health Services of Central Florida, LLC
Matthew Palma, Broad and Cassel Attorneys at Law
Lori Trainer, Southern Affordable Strategies

Provider Partners

Aspire Health Partners
Central Florida Commission on Homelessness
Henderson Behavioral Health
Homeless Services Network
Pathway Homes of Florida, Inc.
Pathway Homes, Inc.



New Resident Welcome Home Essentials

Seven ways to support our work.

1

Cash donations

help us buy items needed most and fund infrastructure needs (utility + other deposits)

2

Essentials sponsorship

Sponsor an essentials package – select from the packages to the right, denoted with a “□”.

3

Item donations

gently-used household items help us establish homes (*note: we cannot accept used mattresses*)

4

Business bulk item donations

Donate quantities of items your business produces

5

Gift card donations

\$25, \$50, \$75 + \$100 Walmart gift cards help residents in their daily lives

6

Monthly resident sponsorship

Set up a recurring monthly donation in any amount to help our ongoing work

7

New resident move-in sponsorship

\$3,000 funds the full move-in of one resident

Further info/donation pick up/delivery

Marilyn Gutierrez
Development & Program Coordinator
407.300.7081 | marilyn@daveshouse.org

Donations

Online | www.daveshouse.org/essentials

Mail | PO Box 1466 | Windermere, FL 34786

\$50 | Starter Baskets

- Kitchen | dish soap, garbage bags, oil, grains/pasta/rice, spices, sugar, coffee/tea
- Cleaning | disposable gloves, cleaning products, spray bottles
- Laundry | detergent, fabric softener, starch, basket, bleach, hangers
- Daily living | keychain, pens, notepads, flashlight, light bulbs, scissors, basic tool set

\$100 | Daily Care

- Personal | skin, hair, oral and nail care items
- Clothing | underwear, socks, shoes
- Clothing | pants, shirts, sweaters, jackets

\$200 | Household Basics

- Linens | twin bedding: sheet set, pillows, mattress pad, blankets, comforter | bath: towels, hand towels, wash cloths, rug/mat, shower curtain | kitchen: dish cloths, mat/rug, pot holders, paper products
- Kitchen Tools | utensils: silverware, knife set, cooking spatulas + spoons, measuring cups + spoons, can opener, strainer, cutting boards | storage: bags, containers, canisters | organization: paper towel holder, trash can, napkin holder, dish drainer

\$300 | Kitchen

- Cooking | dishes: dish set, glasses, mugs | cookware: skillets, pots, pans, bakeware, mixing bowls
- Small Appliances | toaster, coffee pot, mixer, slow cooker, microwave, filtered water pitcher

\$400 | Household

- Lamps, iron/ironing board, vacuum, broom, mop, clocks, alarm clock, television

\$500 | Furniture

- Artwork + plants
- Bedroom | twin mattress set, dresser, night stand
- Kitchen | table + chairs
- Living room | couch, sitting chair, TV stand, end table, coffee table

Please include a copy of this form with non-online donations.

Name _____

Address _____

Phone _____

Email _____

Note _____

Staff

Pam Gould

CEO & President

407.968.3508

pam@daveshouse.org

Marilyn Gutierrez

Development & Program Coordinator

407.300.7081

marilyn@daveshouse.org

Kitson Rogers

Bookkeeper

kitson@daveshouse.org

Ways To Help

Your support of Dave's House makes a difference in the lives of some extraordinary people who need our help – future residents of Dave's House homes. These are people in our community who, because of serious mental illness, find themselves barely surviving.

A stable home is the catalyst many of them need to get on, and stay on, the road to mental wellness. Dave's House is creating these nurturing environments where people can experience their best lives possible.

Together, we can end the housing crisis for people with serious mental illness.

Get Involved

- See our Welcome Home Essentials List for ways you can assist us with financial or home item donations.
- We have a variety of volunteer opportunities.
- We would love to share our story with your community group.

Contact us for details on how you can get involved.

Email | pam@daveshouse.org

Phone | Pam Gould, 407.968.3508

All charitable donations are deeply appreciated, and contribute to changing the lives of individuals who desperately need assistance.

Dave's House | PO Box 1466 | Windermere, FL 34786 | DavesHouseEvents.org

A COPY OF THE OFFICIAL REGISTRATION AND FINANCIAL INFORMATION MAY BE OBTAINED FROM THE DIVISION OF CONSUMER SERVICES BY CALLING TOLL-FREE, WITHIN THE STATE, 1.800.HELP.FLA [800.435.7352]. REGISTRATION DOES NOT IMPLY ENDORSEMENT, APPROVAL, OR RECOMMENDATION BY THE STATE. YOUR GIFT IS TAX DEDUCTIBLE AS ALLOWED BY LAW; DAVE'S HOUSE IS REGISTERED WITH THE STATE UNDER THE SOLICITATION OF CONTRIBUTIONS ACT 1992 UNDER FEDERAL TAX IDENTIFICATION NUMBER 27-0533943.

